

# NILUFAR PRESENTS "GABRIELLA CRESPI" AN EXHIBITION CELEBRATING THE ITALIAN DESIGN LUMINARY, OPENING OCTOBER 25<sup>TH</sup> 2023 AT NILUFAR VIA DELLA SPIGA, MILAN

OCTOBER 25<sup>TH</sup> 2023–JANUARY 25<sup>TH</sup> 2024  
10AM–7PM

NILUFAR IS PROUD TO PRESENT "GABRIELLA CRESPI," AN UPCOMING EXHIBITION OFFERING AN IMMERSIVE JOURNEY INTO THE WORLD OF THE ITALIAN DESIGN LUMINARY WHOSE CREATIVE BRILLIANCE HAS INDELIBLY SHAPED THE DESIGN LANDSCAPE.

This extraordinary exposition is hosted inside Nilufar Gallery in the heart of Milan, a city that has played an integral part in the designer's life and that has nurtured her creative development and inimitable expression of precious simplicity. The exhibit celebrates Crespi's artistic legacy while paying homage to the creative spirit of Milan.

Born in 1922, Gabriella Crespi embarked on a remarkable journey where she navigated through dynamic artistic periods and solidified her status as an unerring innovator. **Throughout her illustrious career, her design philosophy was characterized by an understated elegance and futuristic elements, crafting a distinct oeuvre amidst a climate of artistic experimentation.** In the 1970s and '80s, Crespi forged her own path as she was not interested in following the artistic currents of that period. Instead, she developed a completely novel aesthetic as she opted to play by her own set of ever-changing creative rules. This is visible in seminal projects such as 'Rising Sun' and 'Plurimi'.



Gabriella Crespi among her *Caleidoscopio* lamps in 1974  
Photo Archivio Gabriella Crespi by Miusy Werner.

In particular, her iconic 'Rising Sun' collection demonstrated Crespi's ability to transmute geometric simplicity into functional artworks radiating warmth and vibrancy.

**Central to Crespi's creative ethos was a careful interweaving of artistic vision with meticulous craftsmanship.** Her discerning selection of materials proved pivotal in shaping her creations. The interplay of bamboo, rattan and bronze – each imbued with rich symbolism and significance – showed off her distinct artistic vocabulary. Her pieces resonate with the intrinsic qualities of these materials, seamlessly melding natural elements with artistic articulation. This creative process was profoundly personal, as Crespi meticulously sourced materials based on their visual allure and tactile resonance, drawing inspiration from her extensive travels and diverse cultural encounters.

The pieces on display in Via della Spiga 32 illuminate Crespi's masterful finesse. Her 'Fungo,' 'Obelisco,' 'Caleidoscopio,' and 'Scudo' lamps transcend functionality to embody a synthesis of form and purpose, casting an ethereal luminosity that transforms spaces. The intricate 'Plurimi' collection, with its modular and transformative furniture, underscores her innovative spirit and

**Press Office:**  
GC Agency  
nilufar@giuliacastelli.com  
giuliacastelli.com  
+39 340 699 2880

**via della Spiga, 32**  
20121 Milano, Italy  
+39 02 780193

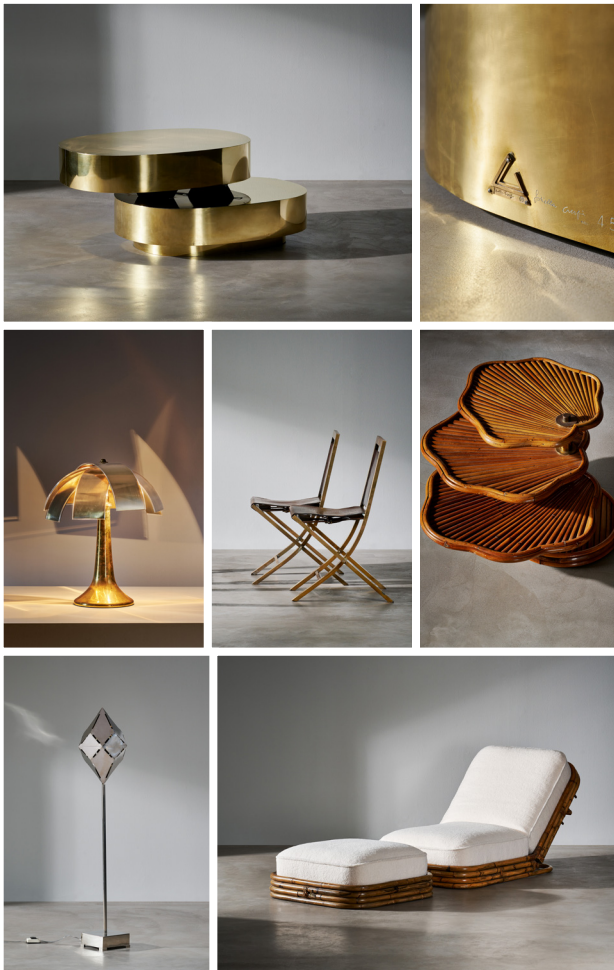
**viale Lancetti, 34**  
20158 Milano, Italy  
+39 02 36590800

[www.nilufar.com](http://www.nilufar.com)

## NILUFAR GABRIELLA CRESPI

predilection for versatility. Crespi's talent resides in her gift for crafting objects that surpass utilitarianism, emerging as timeless icons fused with cultural resonance.

In his introductory text of the exhibition catalog, architect and critic **Joseph Grima** begins by asking **"What is it about the work of Gabriella Crespi that makes its appeal so enduring?"** He responds with the following statement:



"In a landscape dominated by fleeting trends and male auteurs, Crespi's creations emerge as timeless reminders that authentic creativity is not necessarily a function of its own time, or any particular time."

Nina Yashar, the visionary behind Nilufar, brings a unique perspective to this exhibition. Yashar and Crespi, both Milanese and intrinsically cosmopolitan women, briefly met at the beginning of the 1990s; since then, Yashar has been carefully following Crespi's artistic developments while acquiring a few of her creations. In the past four years, Yashar has started to amass a collection of the late designer's work that focus on domestic spaces. After important acquisitions from private individuals, **Yashar has succeeded in curating one of Italy's most extensive collections of Crespi's works.** This exposition not only showcases Crespi's creations but also underscores Yashar's profound appreciation for the convergence of artistic expression and functional design, shaping a dialogue of analogies and differences.

**Adding a contemporary resonance to the narrative, the exhibition will be thoughtfully enriched by juxtaposing contemporary luminous creations by Maximilian Marchesani.**

This dynamic dialogue between past and present reflects the enduring nature of design as an evolving conversation across temporal boundaries. Increasingly, Nilufar is transcending

its role as a mere gallery, evolving into a cultural venue, a platform for dialogue and an experimental nexus for the design world. Under Nina Yashar's stewardship, Nilufar has transformed into a space where the artistic curation resonates profoundly, encouraging visitors to explore and cultivate a discerning sensibility for design. This exhibition encapsulates this transformative journey –and is a testament to Nilufar's evolution into a museum-like space that invites visitors to embrace design as a reflection of cultural narratives and a catalyst for intellectual exploration.

**In the eloquent words of Nina Yashar, "Gabriella Crespi knew no compromises, only strength and courage. She isn't merely one of the greatest women designers; she stands as one of the greatest creators of all time—a true trendsetter. Milan, enriched by her presence, has become a treasure trove of her influence, resonating throughout the**

**Press Office:**  
GC Agency  
nilufar@giuliacastelli.com  
giuliacastelli.com  
+39 340 699 2880

**via della Spiga, 32**  
20121 Milano, Italy  
+39 02 780193

**viale Lancetti, 34**  
20158 Milano, Italy  
+39 02 36590800

[www.nilufar.com](http://www.nilufar.com)

## NILUFAR GABRIELLA CRESPI

*creative landscape. Each of her pieces gracefully encapsulates her intimate self, fostering a dialogue that continues to enrich us through time."*

### ABOUT NILUFAR

Founded in 1979 by Nina Yashar, Nilufar is today one of the most influential names in the world of design. It is a hub of contemporary and historic design, serving as an important reference for collectors, institutions and design enthusiasts.

Nina Yashar's 40-plus years of experience have contributed to making Nilufar a premier design destination. The space is characterized by an eclectic selection of unique pieces and collectible objects, including works by contemporary talents and the great masters of international design. The visionary creativity of Nina Yashar, who is able to anticipate shifts in the ever-evolving field of design, offers a modern, multicultural outlook mixing an array of aesthetics and styles not limited to specific time periods or geographical areas.

The evolution of the Nilufar gallery, situated in the charming pedestrian lane of Via della Spiga in Milan, has seen the project expand in exciting directions. In 2015, a 1,500-sqm exhibition space inspired by the La Scala opera house was inaugurated in the city. This second site complements the original venue, hosting exhibits exploring design narratives and presenting contemporary limited edition pieces alongside iconic works from the 20th century.

Each year, Nilufar's venues attract an international audience of architects, designers, curators, interior decorators, journalists as well as prominent figures from the world of fashion. In recent years, Nilufar has become a must stop during Milan Design Week, when it typically receives over 5,000 guests at its two locations. The gallery has over 130,000 followers on Instagram and offers captivating content on a daily basis.

[nilufar.com](http://nilufar.com) / [@nilufargallery](https://www.instagram.com/nilufargallery)

### ABOUT NINA YASHAR

Gallerist, collector, patron and undoubtedly one of the most prominent pioneering taste-makers in the world of contemporary design, Nina Yashar is the founder of Nilufar Gallery. Born in Tehran, Yashar relocated to Milan where her father became a leading merchant of Persian carpets and precious textiles. Yashar started her career working alongside him before opening her own business at the age of 21. She initially dealt in antiques and 19th-century French carpets before discovering a strong interest in historical design masterpieces and contemporary trailblazers. In a career spanning 40-plus years, Yashar has overseen an unparalleled collection of projects, exhibitions, furnishings and talent discoveries that have changed the face of collectible design. Her signature taste is a unique blend of seemingly distant worlds: Crossing is in fact the title of one of her first catalogs, today a must-have guide for many in the design world.

### ABOUT GABRIELLA CRESPI

Gabriella Crespi (1922-2017) was a celebrated Italian designer known for her innovative creations of furniture and objets d'art. Crespi studied architecture at the Milan Polytechnic, developing an approach to design influenced by Le Corbusier and Frank Lloyd Wright. She began her career in the 1950s, producing unique works such as the "Small Lune Collection". During the 1960s, she collaborated closely with Maison Dior, expanding her work to home and table accessories. Her creations, which combined innovative design and sculptural abstraction, have gained international recognition. In addition to furniture design, Crespi has also dedicated herself to the creation of jewelry and sculptures, leaving a lasting imprint on the field of art. Her creative pursuit has remained an inspiration for future generations of artists. Throughout her life, Crespi sought to balance her passion for design with a deep spiritual quest, spending nearly two decades on a spiritual sojourn in the Himalayas. In 2005, she returned to Italy and began working on her book "Searching for Infinity, Himalayas", published in 2007, which reflects her spiritual journey. In 2008, she collaborated with Stella McCartney on a limited re-release of some of her 1970s jewelry collections, donating the proceeds to Shree Baba Haidakhan Charitable and Research Hospital in the Himalayas.

Gabriella Crespi died in Milan on 14 February 2017, leaving an indelible mark on the world of Italian art and design. Her work continues to inspire artists and designers around the world.

[gabriellacrespi.it](http://gabriellacrespi.it)

#### Press Office:

GC Agency  
[nilufar@giuliacastelli.com](mailto:nilufar@giuliacastelli.com)  
[giuliacastelli.com](http://giuliacastelli.com)  
+39 340 699 2880

#### via della Spiga, 32

20121 Milano, Italy  
+39 02 780193

#### viale Lancetti, 34

20158 Milano, Italy  
+39 02 36590800

[www.nilufar.com](http://www.nilufar.com)